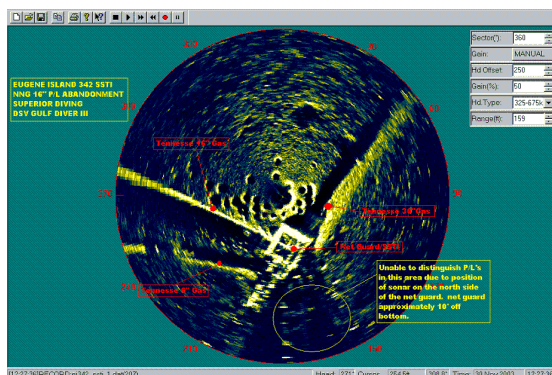


# Bottom Scanning Sonar Services



## Sonavision

### SV4000 Bottom Scanning Sonar

- » Tuneable and Variable Frequency Heads
- » Long Range Capabilities (+600ft)
- » Operational in Depths to 1500 meters
- » 27deg. Vertical Beam
- » Titanium Body

## Simrad Kongsberg

### MS1000 Bottom Scanning Sonar

- » Capable of Intergrating External Sensors (GPS, etc.)
- » Annotations Utilizing Overlays
- » High Resolution Sonar Head (675kHz)
- » 30deg. Vertical Beam
- » Range Capabilities to 225ft
- » Aluminum Body-High Anodized Enclosure
- » Operational in Depths to 3000 meters



- » Search Assignments
- » Recovery/Salvage Operations
- » Construction Tasks
- » Guiding Divers
- » Monitoring Dive Operations/Sites