

# Topside Survey Equipment



## Trimble DSM232 GPS

- » Capable of sub-meter, decimeter, centimeter accuracy
- » Combined beacon, GPS, satellite differential correction antenna
- » Coast Guard Beacon, WAAS, Omnistar Differentially Corrected
- » Dynamic Marine Positioning Tasks



## Trimble 4000 Series

- » RTCM SC-104 differential processing
- » Operates in Static or Mobile
- » 1 meter accuracy
- » Position and Velocity updated every .5 sec.
- » Processes RTCM Differential Corrections



## Remote Tracking System

- » Tug Tracking for Anchor Placement
- » CSI-GBX/Integrated GPS w/Coast Beacon Differential
- » Teledesign Radios-Advanced Technology

## GyroCompass/Heading Indicator



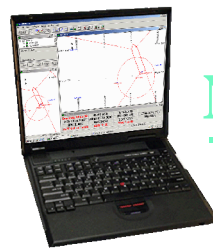
- » SG Brown Meridian Northseeking GyroCompass  
*Dynamic Heading Accuracy, 0.6deg.*  
*Static Heading Accuracy, 0.1deg*  
*Follow up time, 200deg/sec*



- » SG Brown GyroCompass 1000S  
*Synchro and multiple serial outputs*  
*Static Heading Accuracy, 0.15deg*  
*Follow up time, 20deg/sec*




- » Hydrographic Products Digital Heading Indicator  
*Electromagnetic compass*  
*Static Accuracy, 2deg*  
*Cost effective heading sensor*

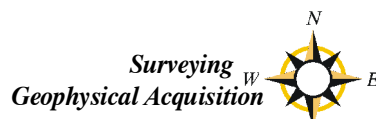


## Navigation Package

- » Winfrog Navigation Software
- » Hypack
- » Geoid

## C-Nav DGPS <sup>®</sup>

- » World-Wide Horizontal Accuracy, 0.1 meter
- » Real Time Gypsy (RTG) Technology 
- » WCT, WAAS, Dual Frequency Stand Alone



*Marine Surveys, LLC*

a JD SILVETTI Company

403 Mecca Dr. Lafayette, La. (337)237-2137